



# Trees and forests in landscape mosaics: Partnership for poverty alleviation and biodiversity conservation outside protected areas

J-L. Pfund<sup>1</sup>, K. Schmidt<sup>2</sup>, M. Hailu<sup>1</sup>, M. van Noordwijk<sup>3</sup>, Y. Saloh<sup>1</sup>

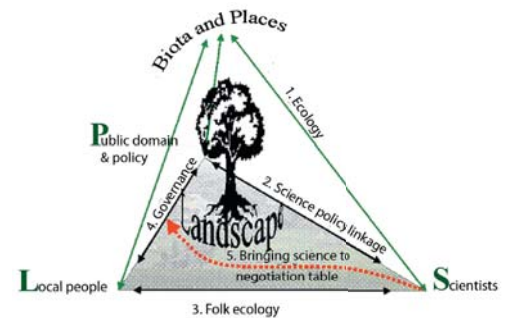
**Poverty alleviation and biodiversity conservation goals must go hand-in-hand in today's world.** Forests and forest products are essential for the livelihoods of hundreds of millions of the world's poor. Humans use at least 40,000 species of plants and animals on a daily basis for food, shelter, clothing and medicinal needs.

## CIFOR and ICRAF's joint Biodiversity Platform: Research on trees and forests in landscape mosaics

SDC, in collaboration with Intercooperation, supports a new partnership between CIFOR and ICRAF that focuses on issues related to biodiversity conservation, sustainable use of natural resources and equitable benefit-sharing in **multifunctional landscape mosaics**. With the decrease in contiguous forest areas, these mosaics are of increasing importance for both livelihoods and biodiversity conservation.

The joint Biodiversity Platform aims to:

- Promote **dialogue and networking** among different stakeholders to catalyze new thinking, approaches and practices for biodiversity conservation and sustainable use of natural resources in multifunctional landscapes.
- Provide opportunities for:
  - **Sharing lessons, especially across disciplines, sites and scales.**
  - Creating synergies (e.g. of resources, skills, roles).
  - Adding value (e.g. through syntheses and generalization).



The landscape approach integrates the perceptions of different key stakeholders. Research can provide new information and insights to create synergy between the different groups and levels.

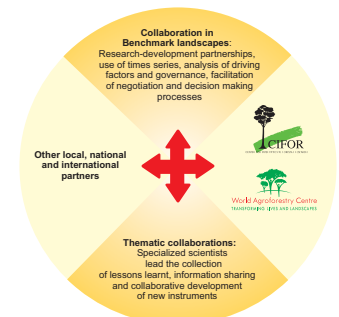
## The approach

The Platform will synthesize lessons learnt and develop innovations for different types of **tree-based poverty alleviation strategies at a landscape level** such as:

- **Preserving biodiversity services and products that support rural livelihoods** by adding value to traditional knowledge (e.g. on sustainability, ecological thresholds).
- **Increasing income from biodiversity products and services** of tree-based landscape patches (e.g. through production in diverse agroforests, innovative incentive mechanisms, such as rewards for conservation services of landscape patches for conservation as stepping zones or corridors).
- **Improving equity of access and benefit-sharing processes.** The Platform will investigate the effects of local rules and governance on poverty alleviation and biodiversity conservation, and their integration into regulatory frameworks.

## Action research

The Platform will identify research sites representing different types of landscapes in the tropics. In partnership with local and other stakeholders, project researchers will develop innovative tools and adaptive institutional arrangements for negotiation and decision-making that will promote judicious management and use of natural resources in landscape mosaics.



**Acknowledgements** - The financial support of SDC and the Finnish Government, and inputs provided by many colleagues at CIFOR, ICRAF, Intercooperation, ETH Zurich and SDC for launching the joint Biodiversity Platform are gratefully acknowledged.



<sup>1</sup> CIFOR, PO Box 6596 JKPWB, Jakarta 10065, Indonesia.

<sup>2</sup> Intercooperation, PO Box 6724, 3001 Berne, Switzerland.

<sup>3</sup> ICRAF PO Box 161, Bogor 16001, Indonesia.